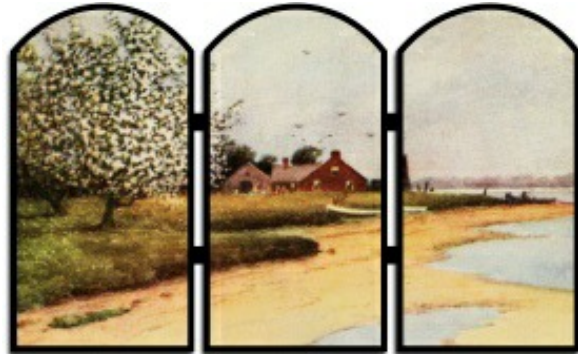


TITLE: EASY TRIPTYCH**Software:** Serif DrawPlus X8**Author:** [MaryLou White](#)**Website:** [Wishing Well Tutorials](#)**Skill Level:** Intermediate**Supplies:** None**Description:** This tutorial will show you how to make a lovely triptych using a few shapes and a photograph. Very easy with nice results.**LET'S GET STARTED**

A triptych (trip-tik) is a set of three panels or compartments side by side, bearing pictures, carvings, or the like. For this tutorial, you will need a wide photo to create your triptych. If you do not have one, you will find a wide selection of copyright free for personal use photos at the [PIRC Photo Gallery](#). Your photo should be around 600x400 pixels in size.

Open a new drawing in a size of your choice. On the **Page Setup**, set the units to **Pixels**, the orientation to **Landscape** and set all the **Margin** values to zero.

Click the **Insert Picture** icon on the Drawing toolbar and find the photo you wish to use for your Triptych.

Slide your image to the top of the drawing page and then over to the left so you can see the image size on the rulers. Now you get to do a little math. Don't worry, it's easy stuff!

Divide the width of your picture by 3, then subtract 15 from the total and write down that number.

Subtract 50 from the height of your picture and write down that number.

Select the **Rectangle** from the Drawing toolbar. Line color = Black, Fill color = White.

Double click to open the **QuickShape Creator**. Change the width to the first number you wrote down. It will be about 1/3rd the size of your photo.

Change the height to the second number you wrote down. This will be about 3/4ths the height of your image.

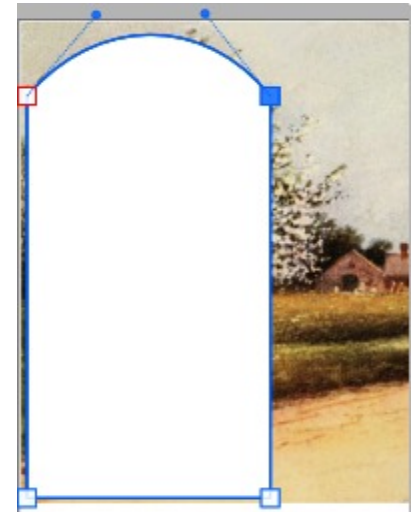
Move the rectangle to the left side of the image. It should look similar to the image on the right.

Right-click the rectangle and select **Convert to Curves** from the menu.



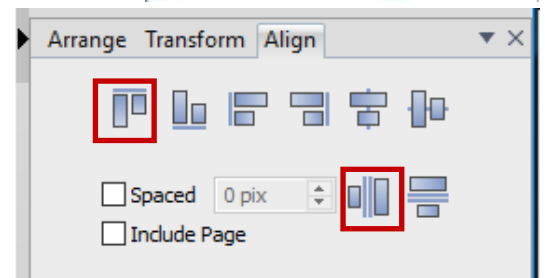
Using the **Node** tool, drag the top of the rectangle up to form an arch. Try to get it as centered as you can.

Hold down the **CTRL** key, and with the **Pointer** tool, drag the rectangle to the right to create a copy. Repeat to create a second copy.

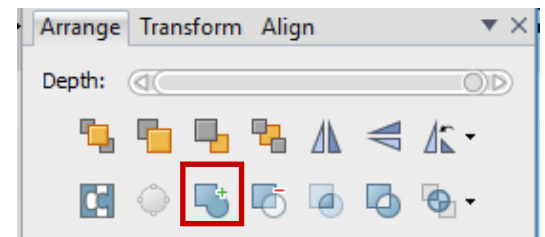


Hold down the **CTRL** key and select the 3 arched rectangles.

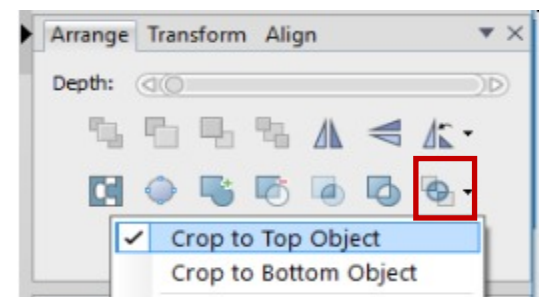
On the **Align** tab, align the arches at the top, then distribute them evenly, horizontally.



While the 3 arched rectangles are still selected, click the **Add** icon on the **Arrange** tab. This will add the three rectangles together as one single object.



Using the **Pointer** tool, drag a box around the photo and the arched rectangles. Then, on the **Arrange** tab, click the drop-down menu on the last icon and select **Crop to Object**. The end result should look like this:



The result is three perfect related images. You can change the line width to form a border around each image and you can use other special effects like a drop shadow. You can add a bar behind the images to give it a bit more interest. Don't be afraid to experiment!

OTHER SHAPES

Let's try this using a different shape. Open another photo of your choice. Draw a rectangle to fit about 1/3rd of your image. Line=black, Fill = white (or none).

Duplicate the rectangle two times. Select the three rectangles. **Align to Top** and **Distribute Horizontally**.

While the rectangles are still selected, click the **Add** icon on the **Arrange** tab to combine the three rectangles into one single icon.

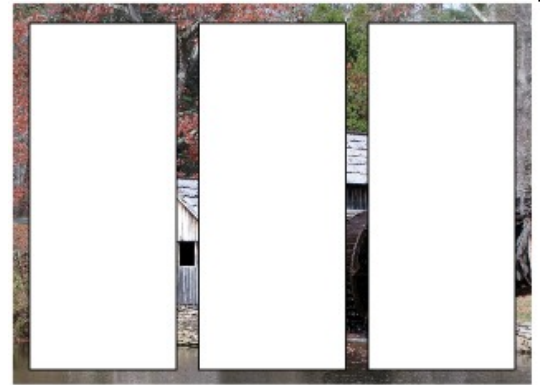
Position the rectangles on your photo. You could change the **Fill** to **None** to help you place the rectangles where you want them. Select the rectangles and the photo, then click **Crop to Top** on the **Arrange** tab.

Draw a rectangle that's a bit larger than the 3 panels and Send to Back. This will serve as a background for your image. Leave it white or make it any color you like.

Select the new rectangle and the photo. Align both vertically and horizontally.

Change the **Line** width around the 3 rectangles to 1 pt.

Change the **Line** width around the background image to 5 pt to create a frame around the entire image. This line can be any color your like. You may wish to add a drop shadow to the 3 rectangles. Sign your image and you're done!



Try different shapes such as the one on the right. This was created using a rectangle and two ellipses combined into one object. Then duplicate two times.

The possibilities are endless!

Let your imagination go and see what you can come up with!

Enjoy!



You're invited to join the [PIRCForum](#). This is an active forum for PaintShopPro and DrawPlus users. You'll find a wonderful group of warm, friendly, talented, and knowledgeable people who are ready and willing to share their expertise with you. There are creative activities for all skill levels. This forum is "family friendly", 100% free, and everyone is welcome.

Copyright© MaryLou White. This document may not be translated, duplicated, redistributed or otherwise appropriated without permission.