

**TITLE: INTRO TO STYLES**

**Software:** Serif DrawPlus X8

**Author:** [MaryLou White](#)

**Website:** [Wishing Well Tutorials](#)

**Skill Level:** Intermediate

**Supplies:** [tj-styles.zip](#)



**Description:** This tutorial will show you how to create a custom style and how to save it to the Styles tab. It is not an all inclusive tutorial, just the basics.

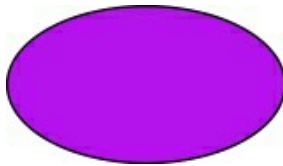
**LET'S GET STARTED**

Download the **Supplies** for this tutorial. Unzip the tj-styles.zip files where you can find them. The file contains a selection of styles with an extension of .gstyles. You will import these into the Styles tab later in this tutorial.

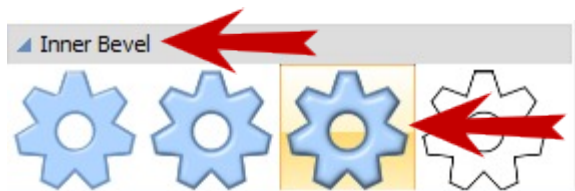
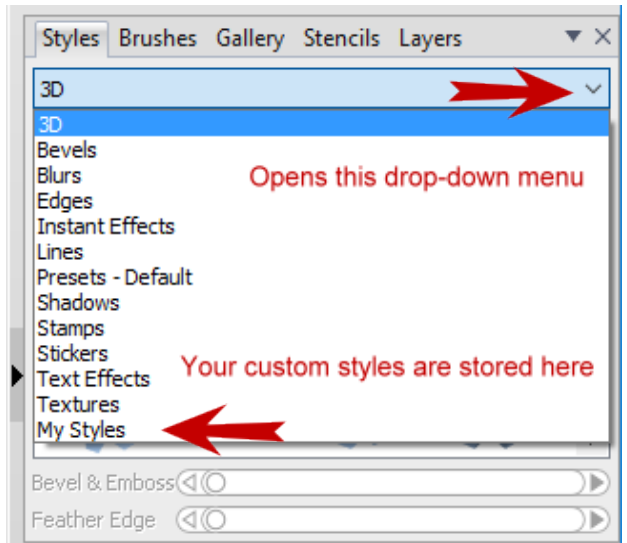
Open a new drawing in a size of your choice. Open the **Styles** tab on the right side of the workspace. If it is not visible, click **View\Studio Tabs\Styles Tab** on the main menu.

On the **Styles** tab, click the down arrow to open the menu. There are many different categories available as well as a category where you will save your own styles.

From the **QuickShapes** tools, draw out a small ellipse. Size is not important. Choose any color.



From the **Styles** menu, select the **Bevels** category. Scroll down to the **Inner Bevel** sub category. With your ellipse selected, click on the third style (large). Your flat ellipse now has a nicely beveled edge.



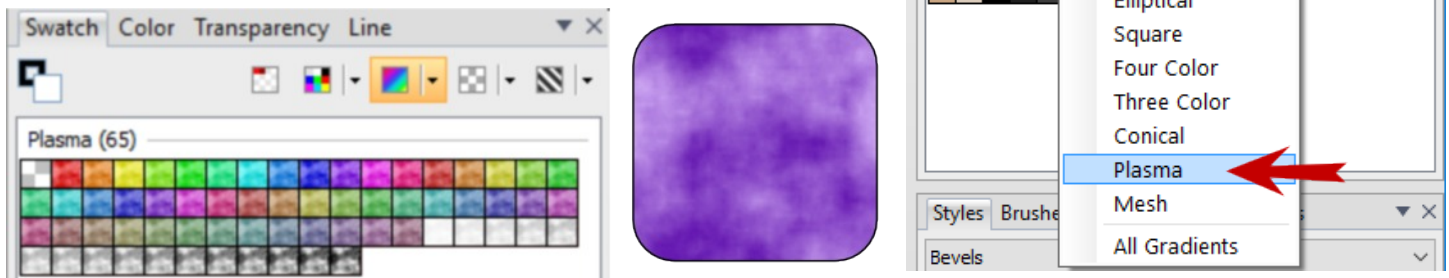
There are a number of styles listed under each main category. Take some time to familiarize yourself with them and see what they can do. You can delete the ellipse when you're finished with experimenting.

## CREATING A STYLE

Now comes the fun part. You will be creating your own style preset that you can use many times over.

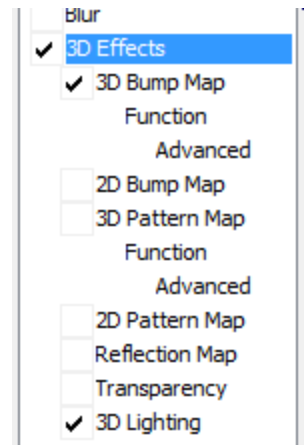
From the **QuickShapes** tools, draw out a rectangle. Size and color aren't important. Just for fun, make the rectangle about rounded by about 35%.

On the **Swatch** tab, click the **Gradient** menu down arrow. Select **Plasma**. With your rectangle selected, click a color of your choice.



Open the **Effects** on the Drawing toolbar. Select **3D Effects** from the menu. Add a checkmark next to **3D Bump Map** and **3D lighting**. The only values you need to change are those for the **3D Bump Map**. Change the values as below.

**Z Depth: 805, B Depth: 820.**



Click OK. The result should look something like this:

## SAVING THE STYLE

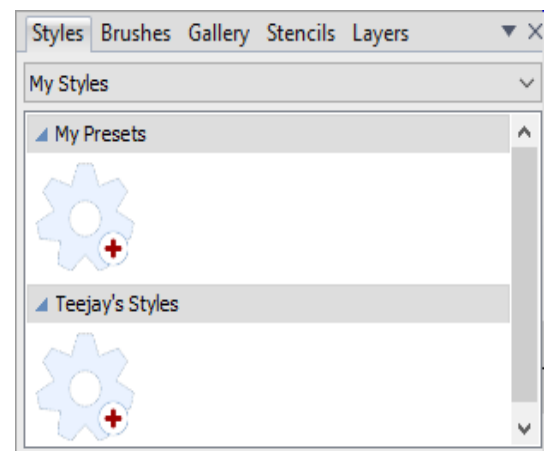
Before you can save your style, we need to set up a sub category in the **Styles** tab under the **MyStyles** main category.

Select **MyStyles** from the drop-down menu. Right-click on the **Styles** tab and select **Add New Subcategory**.

When the **Add Category** menu opens, type in a name of your choice. **My Presets** is a good choice.

Since you will be adding the styles you downloaded earlier, go ahead and create another sub category called **Teejay's Styles**.

Your styles window should look like this. You should have **My Styles** with two sub categories. You can have as many sub categories as you like. Each one will have the cog icon with the red + which we will cover later.



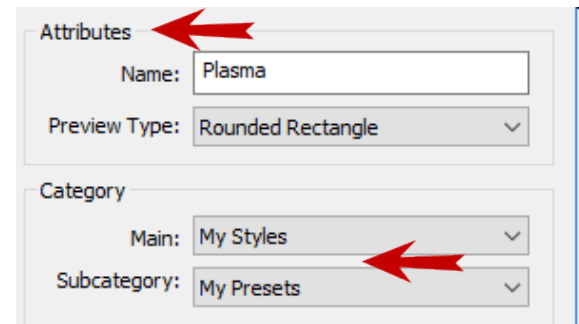
Let's save the style you just created. **Right-click** on your rectangle and choose **Create Graphic Styles** from the menu.

This will open the **Graphic Style Editor**. The column on the left are values that you can change before saving your style. We won't go into those at this time since this is an introductory tutorial.

Look on the right side of the editor. You will see your preset displayed as a cog, rounded rectangle, sample text and the letter A. These are the **Preview Types**.



In the **Attributes** area, give your style a name. On the **Preview Type** dropdown menu, pick one of the four types to be used to display your style. Select **My Styles** from the Main dropdown and **My Presets** (or whatever you named it) from the **Subcategory** list.

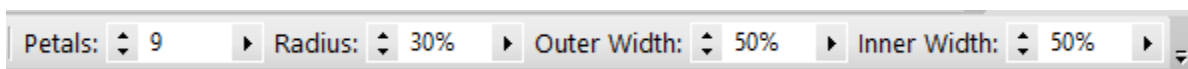


Your new style should appear in the **Styles** tab under **My Styles**. Your shape may look different if you chose the Cog or letter A or Sample Text. The shape you use has no effect on the image where you apply the style. You can delete the image from your workspace if you wish.



## **USING YOUR STYLE**

Now that you've created a new style, let's put it to work! From the **QuickShapes** tools, draw out a **petal**. Line and color are not important. Set the petals values on the Context toolbar to those shown below.



With the petal active, double click on your new style and apply it to the petal. It should look similar to the one shown here. You can easily change the color by selecting a different color from the Swatches.



You can create an unlimited number of styles as you are working on other images. The settings for this pretty style were created by Lynn Rainwater.

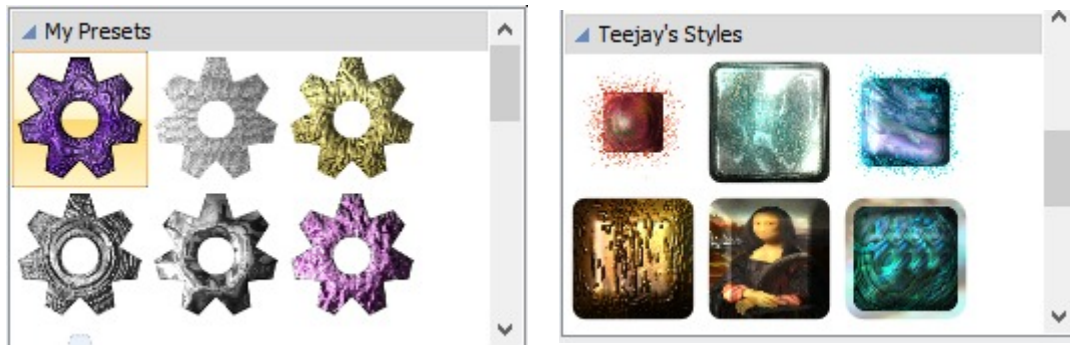
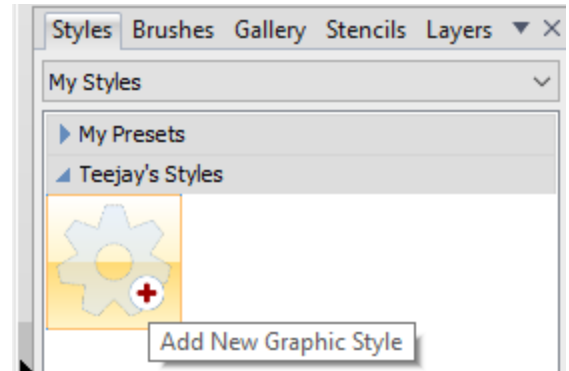
## **IMPORTING STYLES**

The greatest thing about these styles is they can easily be shared with other DrawPlus users. We'll start with importing the styles that you downloaded.

On the **Styles** tab, find **My Styles** on the drop-down menu. Then select the **Teejay's Styles** sub category.

Click the red plus sign to open the **Graphic Style Editor**. Look down at the bottom of the window and click the **Import** button. Navigate to where you unzipped the supplies. Click on **tj-dissolve.gstyle**, then Open.

Choose a **Preview Type** and click OK. Repeat until you have imported all of the styles.



## **EXPORTING STYLES**

Exporting is simple. **Right-click** on the style you want to export. Select **Edit Style** from the popup menu. When the **Graphic Style Editor** opens, click **Export**. Choose your location and save.

## **NOTES**

Right-click on the Styles tab and select the Graphic Styles Manager. Here, you can add new categories, delete them, move the categories around in any order you want them.

When you create a style, you can type keywords or tags in the large window. Then, you can search for a style from the Styles menu based on the tags.

When you apply a style to your image, you can edit it further by going to the **Effects** area. If you change it and make a new effect that you really like, save it as a new style.

Thanks to Lynn Rainwater and Teejay Joyce who created the great styles used in this tutorial!

## **HAVE FUN!!**

---

You're invited to join the [PIRCForum](#). This is an active forum for PaintShopPro and DrawPlus users. You'll find a wonderful group of warm, friendly, talented, and knowledgeable people who are ready and willing to share their expertise with you. There are creative activities for all skill levels. This forum is "family friendly", 100% free, and everyone is welcome.

Copyright© [MaryLou White](#). This document may not be translated, duplicated, redistributed or otherwise appropriated without permission.